

Object:	Hilton Frankfurt Airport
Date	2011
Place	Frankfurt am Main
Implementation date	2011
Task	Installing glass mosaics
Property size	470 m ²
Products used	PCI Bicolit Classic, PCI Nanofug
Architect	JSK Dipl.-Ing. Architekten, Frankfurt am Main JOI-Design GmbH, Hamburg
Client:	The Squire GmbH & Co. KG Hilton Frankfurt Airport
Site management	ARGE Innenausbau Airrail Center Frankfurt, Hofheim-Wallau near Frankfurt, Germany
Engineering consultant	(FH) Ralf Marth, Marth engineering and consulting services, Mendig, Germany
Technical consulting	PCI application engineer Dipl.-Ing. Jörg Hilden

A ballroom receives its ball dress.

Creating the glittering highlight in the Hilton Frankfurt Airport

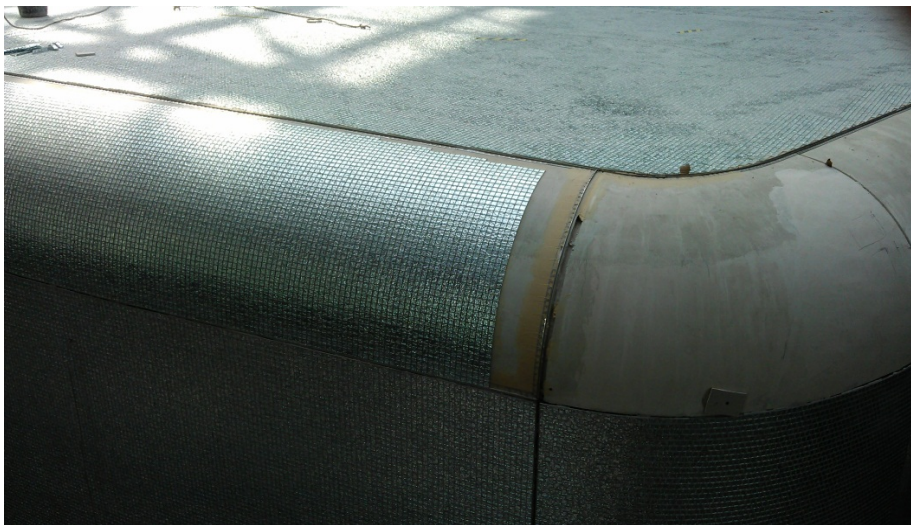
The Squire GmbH & Co. KG is Germany's largest office building (length 660 metres, width 65 metres, height 45 metres, 9 floors) and accommodates not only business areas but also two spacious atriums with restaurants, cafés, shops and two hotels run by the renowned Hilton Group: the Hilton Frankfurt Airport and the Hilton Garden Inn Frankfurt Airport. The first features a special attraction, the Globe ballroom. A monolithic yet compact-looking building with a floor area of 470 square metres and external height just short of an impressive ten metres. The metallic-looking surface has been covered in reflective glass mosaics by construction professionals from specialist tiling company, Bäder-Bechthum GmbH & Co. KG. For this they used a familiar, tried and tested bonding system, the single-component, dispersion-based adhesive, PCI Bicolit Classic. Neutrally cured, easy to use, light in colour, versatile and highly adhesive, PCI Bicolit Classic proved to be ideal flooring installation material for the intricate mosaic work. Packed in an 18-kg bucket and ready-to-use, the adhesive complies with the requirements of regulation D1TE according to DIN EN 12004. The adhesive requires no mixing, making it possible to cover the entire outside of the

Globe quickly. Joining the walls and ceilings at the rounded edges of the ballroom proved to be the biggest challenge the craftsmen faced. However, using the dispersion-based adhesive made this work much easier. The outcome of previous trial installations by expert craftsmen in the Marth workshops and engineers in the testing department at PCI Augsburg GmbH was that, although the glass mosaics had to be installed without cement, they could still be grouted with a cement-based joint grout. It was the silver-grey, variable, flexible joint grout, PCI Nanofug, used to grout the glass mosaics that gave the entire finish its eventual characteristic appearance.

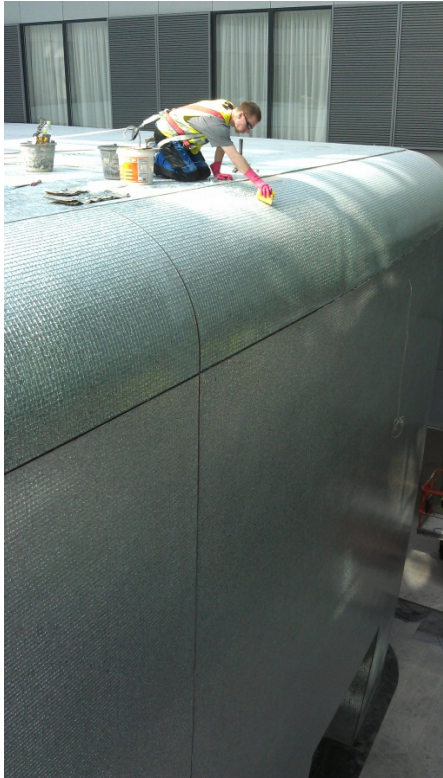
Photos and captions



Neutrally cured, easy to use, light in colour, versatile and highly adhesive, the dispersion-based adhesive, PCI Bicolit Classic, proved to be ideal flooring installation material for the intricate mosaic work.



PCI Bicolit Classic made installing the mosaics at the rounded outside edges of the ballroom much easier.



Using a cement-based joint grout to join the mosaic components.



The GLOBE ballroom in the Hilton Frankfurt Airport Hotel – wrapped in its 'ball dress'.